

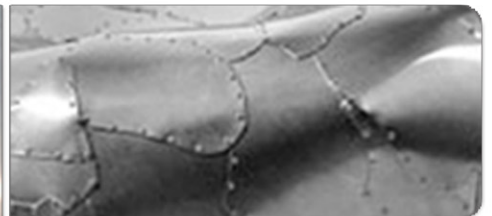
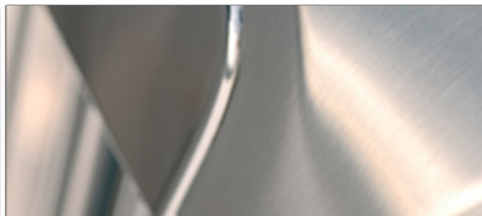
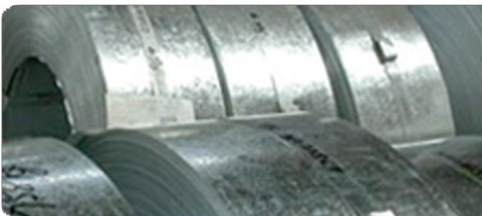


Steel MacTM
LIMITED

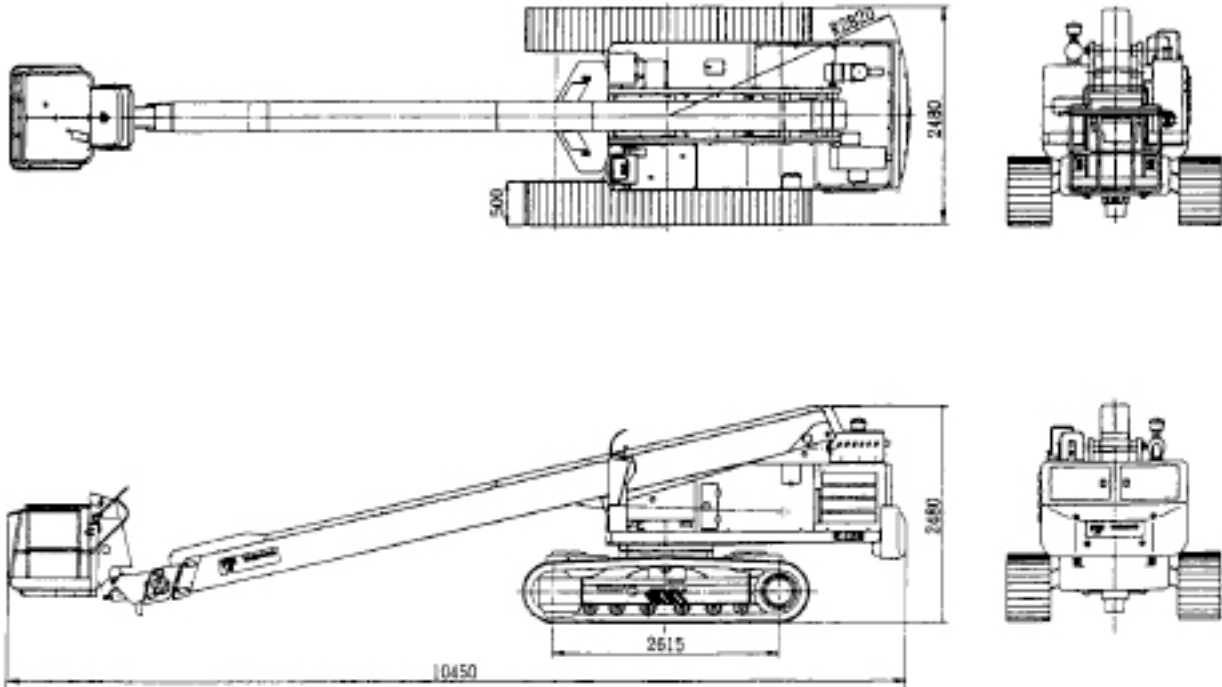
SteelMac Limited, Unit 27 New Harbours, Gibraltar

TADANO AC215TG Aerial Platform

Specification Sheet



TADANO AC215TG Aerial Platform

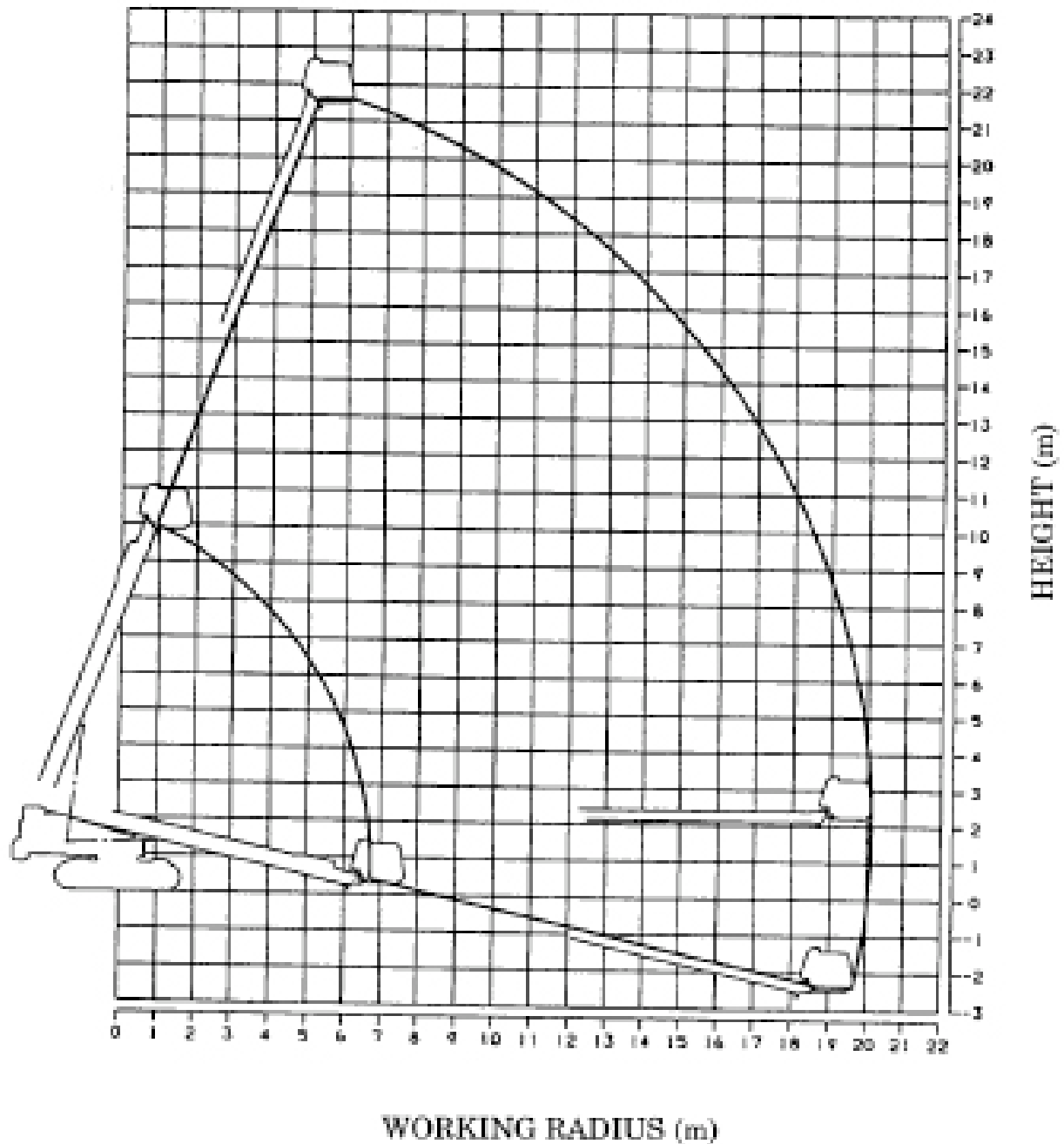


Specifications

Maximum Basket Loading Capacity	200 kg or 2 persons
Maximum Basket Bottom Height	21.5 m
Maximum Basket Working Radius	20.1m
Inside Dimensions of Basket	1.0m X .75m X .95m (Length X Width X Height)
Max.Travel Speed	1.3 km/h
Vehicle Weight	15,700 kg
Overall Length	10,450 mm
Boom Length	8.4m - 20.8m
Overall Width	2,480 mm
Overall Height	2,480 mm
Fuel Tank Capacity	200L

WORKING RANGES

Maximum basket loading capacity: 200kg



NOTES:

1. The working range is that for firm level ground, and the deflection of the boom is not incorporated.
2. The working range is the same over the entire circumference.