



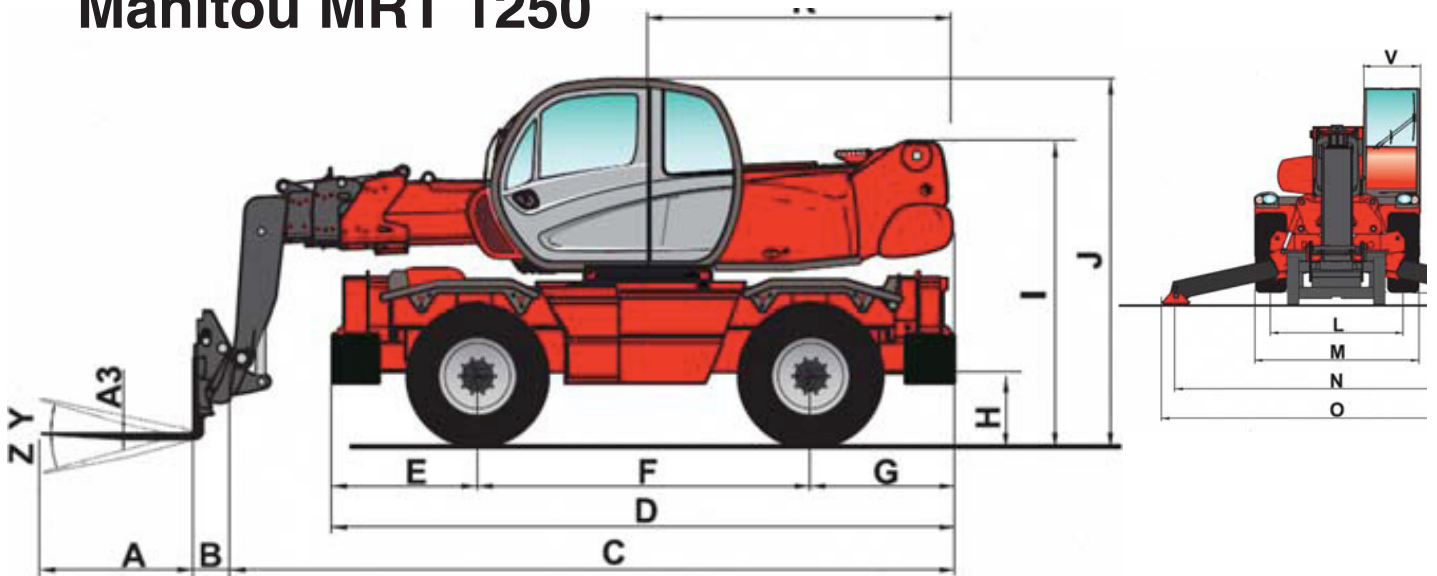
SteelMac Limited, Unit 27 New Harbours, Gibraltar

Manitou MRT 2150

Specification Sheet



Manitou MRT 1250



Specification

Weight	36,700 lb.
Turning radius (outside wheels)	14 ft. 9 in.
Overall height	10 ft.
Overall width	8 ft.
Overall length (without forks)	22 ft. 2 in.
Ground clearance	15 in.
Maximum drawbar pull	18,450 lbf.

Lift Capacity:	
Max. (24" load center - on stabilizers)	10,000 lb.

Lift Height:	
Maximum lift height	67 ft. 7 in.
Maximum forward reach	59 ft. 8 in.

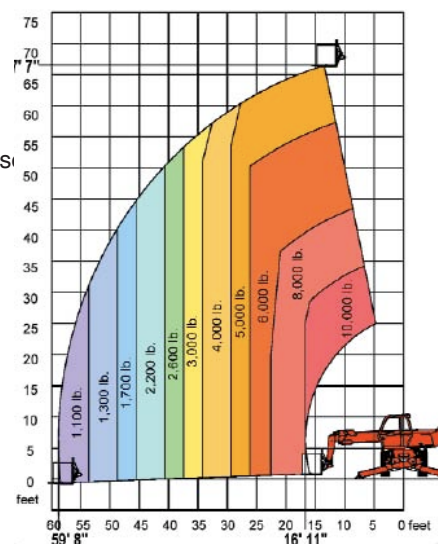
Engine:	
Type	Mercedes OM 904 LA Turbo Dies
Displacement	4 cyl. 259 cu. in.
Power	150 HP / 110 kw
Maximum Torque	428 ft.lb. at 1400 rpm
Maximum travel speed	22 mph

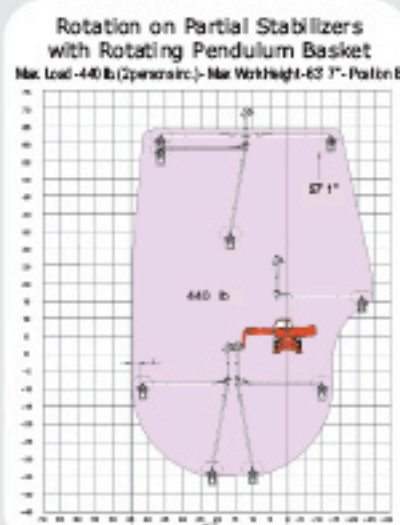
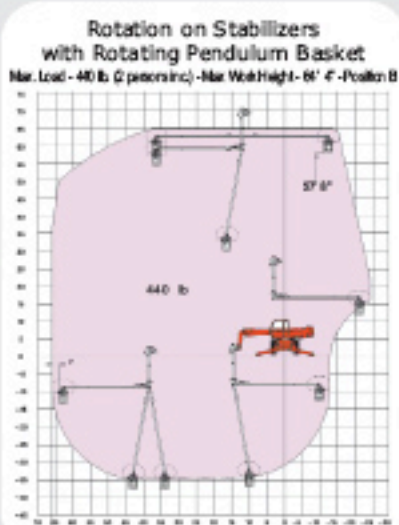
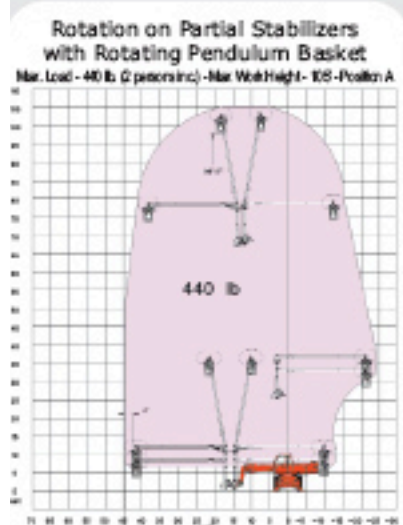
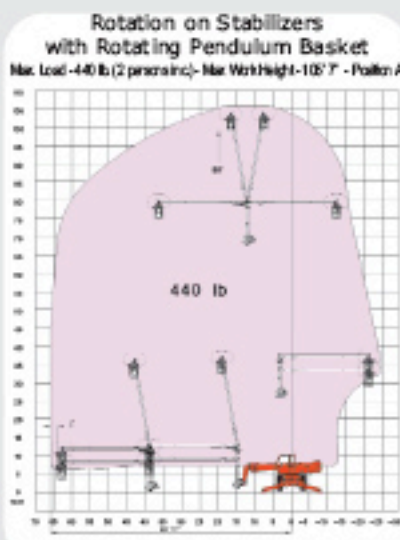
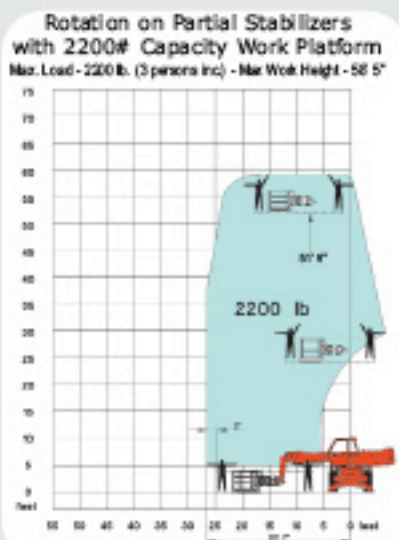
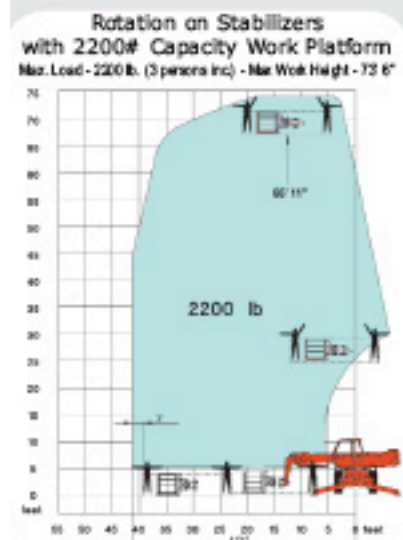
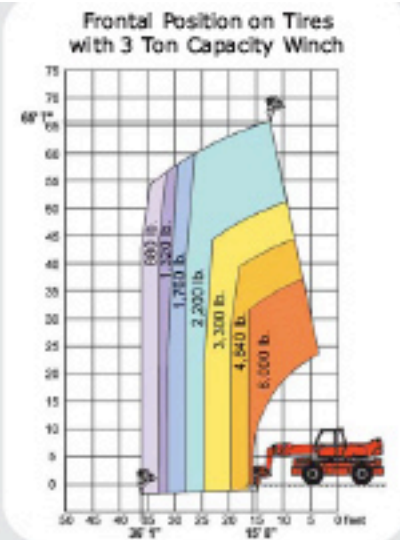
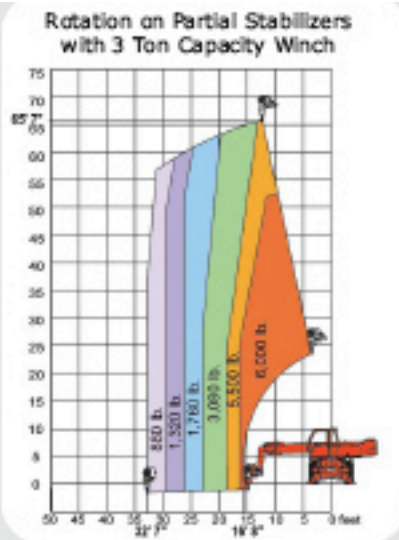
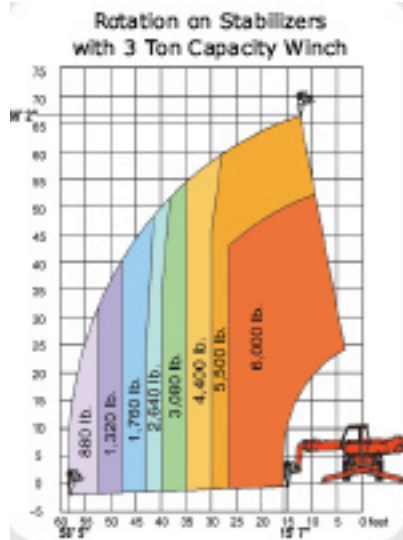
Stabilizers:	
Four simultaneous or individually controlled	

Rotation: (Continuous)

- Turret mounted on a planetary rotation gearbox with internal gear
- Hydraulic and electric rotation

Rotation on Stabilizers with Forks





Manitou MRT 2150 Equipment Specifications

The above machine will be fitted with the following equipment:

STANDARD EQUIPMENT

- Enclosed Cab
- Hydraulic Power Steering
- Three Steering Modes
- Full Time 4 Wheel Drive
- Limited Slip Front Axle
- Outer Planetary Hubs
- Adjustable Seat
- Full Instrumentation
- Load Moment Indicator
- Road Lights
- Horn
- Rotating Beacon
- Backup Alarm
- Inboard Wet Disc Brakes
- Negative Parking Brake
- Quick Fit Tool System
- Automatic Attachment Leveling
- Auxiliary Boom Hydraulics
- Left & Right Side Mirrors
- Neutral Start Switch
- Tow Pin

INCLUDED OPTIONAL EQUIPMENT:

- 3 tonne capacity winch (with Jib)
- Combi Basket with shovel
- Forklift