



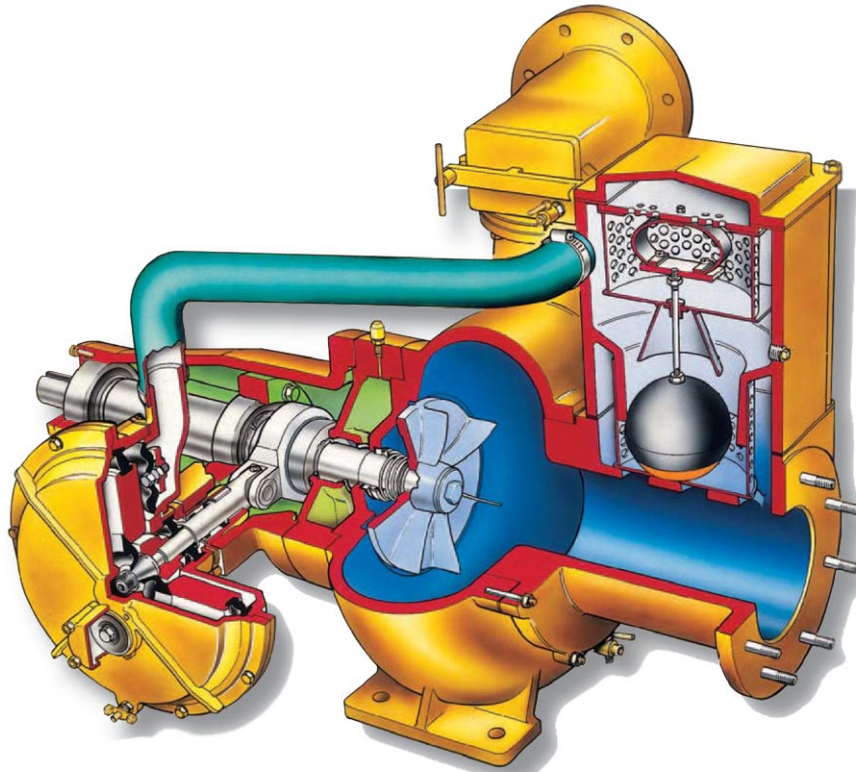
Steel MacTM
L I M I T E D

SteelMac Limited, Unit 27 New Harbours, Gibraltar

SELWOOD 'SELPRIME' S150 Pump

Specification Sheet

Selwood SELPRIME S150 Pump



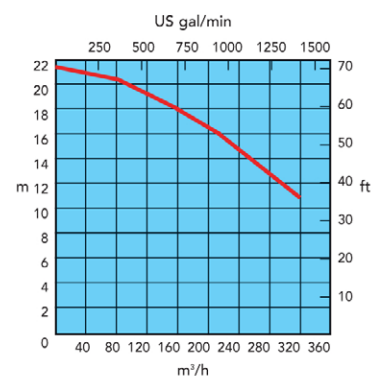
SELPRIME - the unique original Selwood self-priming system utilising a water tolerant diaphragm air pump. An environmentally friendly design that has none of the problems of oil vapour emissions and oil emulsification associated with other priming systems.

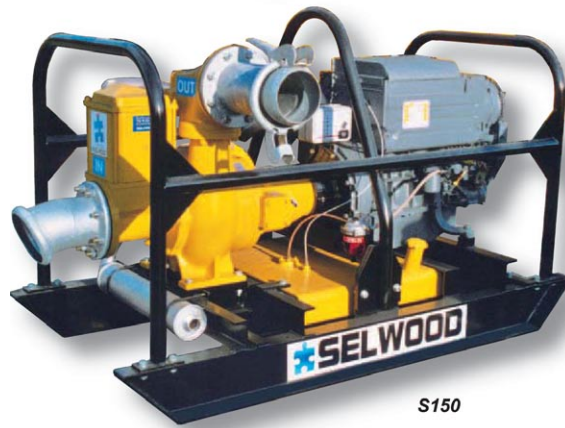
The Selwood SELPRIME S150 can handle all of the following:

- Clean Water
- Water with Fine Solids
- Water with Larger Solids
- Water with Rags & Fibres
- Sludges Slurries
- Oils & Hydrocarbons
- Screened Sewage
- Crude Sewage (Unscreened)

Specifications

Power requirement	24kW
Pump speed	1600 rpm
Capacity	320m ³ /h
Suction lift	9.1m
Max solids size dimensions	100mm
Air handling	24 litres/s
Inlet / Outlet port	150mm
Delivery head	21.3m





S150



Rags & Fibres



Oil



Super Silent



Mud, Silt & Slurry



Sewage



Heavy Iron Oxide