



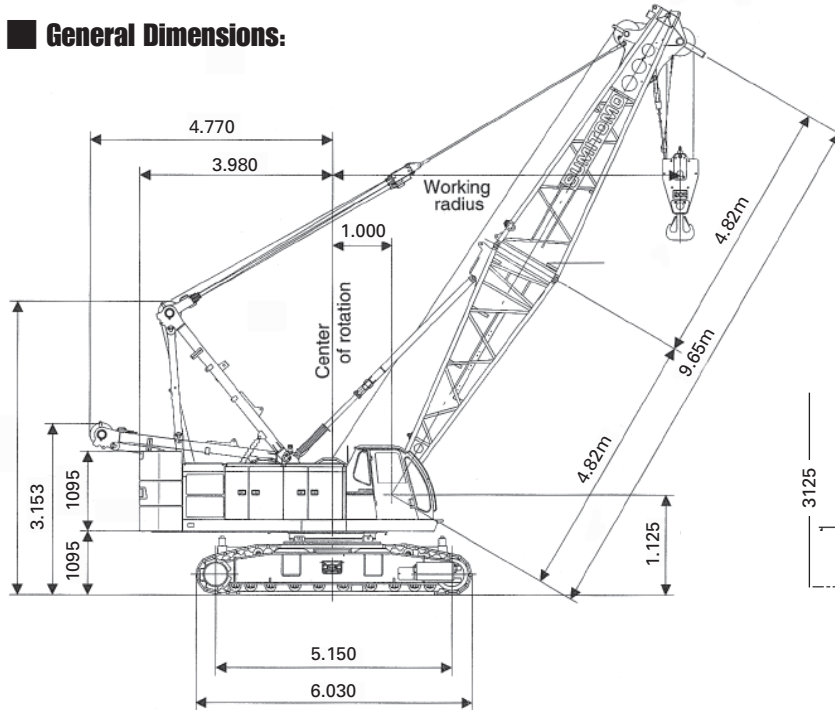
Steel MacTM
L I M I T E D

SteelMac Limited, Unit 27 New Harbours, Gibraltar

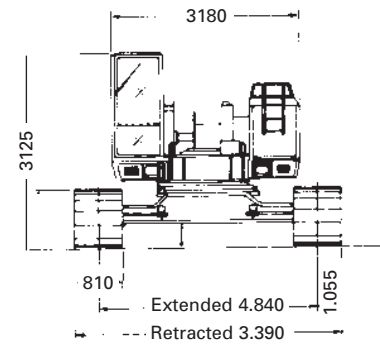
SUMITOMO SC 650-2
Specification Sheet

SUMITOMO SC 650-2

General Dimensions:



New Version



Max-Lift & Radius	65t x 4.0mm
Min boom Length	9.65m
Max Boom Length	43.20m
Fly Jib Lengths	9.15m - 18.30m
Max Boom with Fly	40.15. - 18.30m
Main & Aux Winch Speed Hoist & Lowering	95 - 2m/min
Boom Hoist & Lowering	62 - 3m/min
Swing Speed	3.4rpm
Travel Speed Max	1.6/1.1km/h
Engine Make & Model	HINO H07CT
Rated Output	132.4Kw/2.100min ⁻¹ (180PS/2.100rpm)
Gradient	40% (22°)
Ground Pressure	73.1kpa-0.75Kg/cm ³
Working Weight	66.2t

Hook Block Weights			
65t	35t	20t	6.5t
850Kgs	500Kgs	400Kg	330Kgs
No of Falls	LOAD t		
10	65.0		
9	58.5		
8	52.0		
7	45.5		
6	39.0		
5	32.5		
4	26.0		
3	19.5		
2	13.0		
1	6.5		

SUMITOMO SC650-2 Lifting Capacity Notes

- Capacities included in the Lifting Capacity Charts are the maximum allowable and are based on the machine standing level on firm supporting surface under ideal job conditions.
- Capacities are in metric tons and are not more than the tipping loads in accordance with BS1757.
- Capacities are based on freely suspended loads and make no allowances for such factors as the effect of wind, sudden stopping of loads, supporting surface conditions and operating speeds. The operator must reduce Load ratings to take such conditions into account. Deductions from Rated capacities must be made for Weight of Hook Block, Weighted Ball/Hook, Sling, Spreader Bar or other suspended gear.

SUMITOMO Hook Block Weights are as follows:-

Hook Block	Parts of line Mass (Tons)	Maximum Safe working load (Tons)									
		10	9	8	7	6	5	4	3	2	1
65T	0.85	65.00	58.50	52.00	45.50	39.00	32.50	26.00	---	---	6.50
35T	0.50	---	---	---	---	39.00	32.50	26.00	19.50	13.00	6.50
20T	0.40	---	---	---	---	---	---	---	19.50	13.00	6.50
6.5T	0.33	---	---	---	---	---	---	---	---	---	6.50

- All capacities are rated for 360 degrees.
- Least stable rated condition is over side.
- Full **XXXXX** Ton Counterweight is required for all capacity charts.
- Crawler side frames must be extended fully for all operating conditions.
- Attachment must be erected and lowered over the ends of the crawler mounting.
- Main Boom Lengths must not exceed **XXXX** Meters. Maximum Fly Jib length permitted is **XXXXX** Meters.
- When handling load off Main Boom peak sheaves in case of mounting jib on boom, the following deductions in machine lifting capacities must be made.

Jib Length (Meters)	6.10	9.15	13.70	18.30
Weight to be deducted (Tons)	0.75	1.50	2.10	2.80

- Working Weight & Ground Pressures

Shoe Width	Weight	Pressure
810MM	66.2 Tons	76.4KPA (0.764 Kg/cm ²)

SUMITOMO SC650-2 with Luffing Tower Crane Attachment Combination Diagram

Tower Height (Meters)	Luffing Jib Length (Meters)																							
	16				19				22				25				28				31			
Tower Angle (Degrees)	90	80	70	60	90	80	70	60	90	80	70	60	90	80	70	60	90	80	70	60	90	80	70	60
21.00	O	O	O	O	O	O	O	O	X	X	X	X	X	X	X	X	X	X	X	X	X	X	X	X
24.05	O	O	O	O	O	O	O	O	O	O	O	O	X	X	X	X	X	X	X	X	X	X	X	X
27.10	O	O	O	O	O	O	O	O	O	O	O	O	O	O	O	O	X	X	X	X	X	X	X	X
30.15	O	O	O	O	O	O	O	O	O	O	O	O	O	O	O	O	O	O	X	X	X	X	X	X
33.20	O	O	O	O	O	O	O	O	O	O	O	O	O	O	O	X	O	O	O	X	O	O	X	X
36.25	O	O	O	O	O	O	O	O	O	X	O	O	X	O	O	X	O	O	O	X	O	O	O	X
39.30	O	O	O	O	O	O	O	X	O	O	O	X	O	O	X	O	O	X	X	O	O	X	X	X
42.35	O	O	O	X	O	O	O	X	O	O	O	X	O	O	X	X	O	O	X	X	O	O	X	X

O - Denotes Allowable Combinations
 X - Denotes Unallowable Combinations

SUMITOMO SC650-2 Rated Lifting Capacity Main Boom + Fly Jib

Full Counterweight Installed

Unit: Ton

Fly Jib (Meters)	Boom Length (Meters)											
	21.35			18.3			24.4			27.45		
Angle (Degrees)	10°	30°	10°	30°	10°	30°	10°	30°	10°	30°	10°	30°
8.00	6.50						6.50/8.6					
9.00	6.50		6.50/9.7				6.50				6.50/9.2	
10.00	6.50	5.00/10.9	6.50		4.50/11.2		6.50	5.00/11.4	6.50/10.2		4.50/11.8	
12.00	6.50	5.00	6.50	5.00/13.8	4.50		6.50	5.00	6.50		4.50	
14.00	6.50	5.00	6.50	5.00	4.50		6.50	5.00	6.50	5.00/14.3	4.50	
16.00	6.50	5.00	6.50	5.00	4.50	3.20/16.7	6.50	5.00	6.50	5.00	4.50	3.20/17.3
18.00	6.50	5.00	6.50	5.00	4.50	3.20	6.50	5.00	6.50	5.00	4.50	3.20
20.00	6.50/19.6	5.00/19.6	6.50/19.6	5.00/19.6	4.5/19.6	3.20/19.6	6.50	5.00	6.50	5.00	4.50	3.20
22.00							5.70	5.00	5.70	5.00	4.50	3.20
24.00											4.90	4.90
26.00											4.50/24.9	4.50/24.9
28.00											4.50/24.10	4.50/24.11

Notes:-

Capacities shown are in metric tons and are determined according to BS 1757 - over the side - with machine standing on firm supporting surface under ideal job conditions. Deductions from the lifting crane capacities must be made for weight of hook block. Side frames must be extended for all operating conditions.

SUMITOMO SC650-2 Rated Lifting Capacity Main Boom + Fly Jib

Full Counterweight Installed

Boom Length (Meters)

Unit: Ton

Fly Jib (Meters)	30.50					
	9.15		13.7		18.3	
Angle (Degrees)	10°	30°	10°	30°	10°	30°
Radius (Meters)						
8.00						
9.00	6.50/9.7					
10.00	6.50		6.50/11.3			
12.00	6.50	5.00/12.4	6.50		4.50/12.8	
14.00	6.50	5.00	6.50	5.00/15.4	4.50	
16.00	6.50	5.00	6.50	5.00	4.50	3.20/16.3
18.00	6.50	5.00	6.50	5.00	4.50	3.20
20.00	6.30	5.00	6.30	5.00	4.50	3.20
22.00	5.50	5.00	5.50	5.00	4.50	3.20
24.00	4.80	4.80	4.80	4.80	4.50	3.20
26.00	4.30	4.30	4.30	4.30	4.30	3.20
28.00	3.80/27.5	3.80/27.5	3.80/27.6	3.80/27.7	3.80/27.8	3.80/27.9

Notes:-

Capacities shown are in metric tons and are determined according to BS 1757 - over the side - with machine standing on firm supporting surface under ideal job conditions. Deductions from the lifting crane capacities must be made for weight of hook block.
Side frames must be extended for all operating conditions.

SUMITOMO SC650-2 Rated Lifting Capacity Main Boom + Fly Jib

Full Counterweight Installed

Boom Length (Meters)

Unit: Ton

Fly Jib (Meters)	33.50												36.55				39.60			
	9.15		13.70		18.30		9.15		13.70		18.30		9.15		13.70		18.30			
Angle (Degrees)	10°	30°	10°	30°	10°	30°	10°	30°	10°	30°	10°	30°	10°	30°	10°	30°	10°	30°		
Radius (Meters)																				
10.00	6.50/10.2		6.50/11.8				6.50/10.8						6.50/11.3							
12.00	6.50	5.00/13.0	6.50		4.50/13.4		6.50	5.00/13.5	6.50/12.3				6.50	5.00	6.50/12.8					
14.00	6.50	5.00	6.50	5.00/15.9	4.50		6.50	5.00	6.50			4.50/13.9		5.00	6.50			4.50/14.4		
16.00	6.50	5.00	6.50	5.00	4.50		6.50	5.00	6.50	5.00/16.4	4.50		6.50	5.00	6.50	5.00/17.0	4.50			
18.00	6.50	5.00	6.50	5.00	4.50	3.20/18.9	6.50	5.00	6.50	5.00	4.50	3.20/19.4	6.50	5.00	6.50	5.00	4.50	3.20/19.9		
20.00	6.20	5.00	6.20	5.00	4.50	3.20	6.10	5.00	6.10	5.00	4.50	3.20	6.00	5.00	6.00	5.00	4.50	3.20		
22.00	5.40	5.00	5.40	5.00	4.50	3.20	5.30	5.00	5.30	5.00	4.50	3.20	5.20	5.00	5.20	5.00	4.50	3.20		
24.00	4.70	4.70	4.70	4.70	4.50	3.20	4.60	4.60	4.60	4.60	4.50	3.20	4.50	4.50	4.50	4.50	4.50	3.20		
26.00	4.20	4.20	4.20	4.20	4.20	3.20	4.10	4.10	4.10	4.10	4.10	3.20	4.00	4.00	4.00	4.00	4.00	3.20		
28.00	3.70	3.70	3.70	3.70	3.70	3.20	3.60	3.60	3.60	3.60	3.60	3.20	3.50	3.50	3.50	3.50	3.50	3.20		
30.00	3.30	3.30	3.30	3.30	3.30	3.20	3.20	3.20	3.20	3.20	3.20	3.20	3.10	3.10	3.10	3.10	3.10	3.10		
32.00							2.90	2.90	2.90	2.90	2.90	2.90	2.80	2.80	2.80	2.80	2.80	2.80		
34.00							2.80/32.8	2.80/32.8	2.80/32.8	2.80/32.8	2.80/32.8	2.80/32.8	2.50	2.50	2.50	2.50	2.50	2.50		
36.00													2.30/35.5	2.30/35.5	2.30/35.5	2.30/35.5	2.30/35.5	2.30/35.5		
38.00																				

Notes:-

Capacities shown are in metric tons and are determined according to BS 1757 - over the side - with machine standing on firm supporting surface under ideal job conditions. Deductions from the lifting crane capacities must be made for weight of hook block.
Side frames must be extended for all operating conditions.

SUMITOMO SC650-2 Rated Lifting Capacity Main Boom + Fly Jib

Full Counterweight Installed

Boom Length (Meters)

Unit: Ton

Fly Jib (Meters)	42.65					
	9.15		13.70		18.30	
Angle (Degrees)	10°	30°	10°	30°	10°	30°
Radius (Meters)						
10.00	6.50/11.8					
12.00	6.50		6.50/13.4			
14.00	6.50	5.00/14.6	6.50		4.50/14.9	
16.00	6.50	5.00	6.50	5.00/13.4	4.50	
18.00	6.50	5.00	6.50	5.00	4.50	
20.00	5.90	5.00	5.90	5.00	4.50	3.20/20.4
22.00	5.10	5.00	5.10	5.00	4.50	3.20
24.00	4.40	4.40	4.40	4.40	4.40	3.20
26.00	3.80	3.80	3.80	3.80	3.80	3.20
28.00	3.30	3.30	3.30	3.30	3.30	3.20
30.00	2.90	2.90	2.90	2.90	2.90	2.90
32.00	2.60	2.60	2.60	2.60	2.60	2.60
34.00	2.30	2.30	2.30	2.30	2.30	2.30
36.00	2.00	2.00	2.00	2.00	2.00	2.00
38.00	1.70	1.70	1.70	1.70	1.70	1.70

Notes:-

Capacities shown are in metric tons and are determined according to BS 1757 - over the side - with machine standing on firm supporting surface under ideal job conditions. Deductions from the lifting crane capacities must be made for weight of hook block.
Side frames must be extended for all operating conditions.

SUMITOMO SC650-2 Rated Lifting Capacity Main Boom lifting off Short Jib

Radius (Meters)	Full Counterweight Installed														Unit: Ton
	Boom Length (Meters)														
	12.20	15.25	18.30	21.35	24.40	27.45	30.50	33.50	36.55	39.60	42.65	45.70	48.75	51.80	
4.5	6.50														
5.0	6.50	6.50	6.50/5.5												
6.0	6.50	6.50	6.50	6.50	6.50/6.5										
7.0	6.50	6.50	6.50	6.50	6.50	6.50	6.50/7.6								
8.0	6.50	6.50	6.50	6.50	6.50	6.50	6.50	6.50/8.1	6.50/8.5						
9.0	6.50	6.50	6.50	6.50	6.50	6.50	6.50	6.50	6.50	6.50/9.2	6.50/9.7				
10.0	6.50	6.50	6.50	6.50	6.50	6.50	6.50	6.50	6.50	6.50	6.50	6.50/10.2	6.50/10.8	6.50/11.3	
12.0	6.50/11.7	6.50	6.50	6.50	6.50	6.50	6.50	6.50	6.50	6.50	6.50	6.50	6.50	6.50	
14.0		6.50	6.50	6.50	6.50	6.50	6.50	6.50	6.50	6.50	6.50	6.50	6.50	6.50	
16.0			6.50	6.50	6.50	6.50	6.50	6.50	6.50	6.50	6.50	6.50	6.50	6.50	
18.0			6.50/17.0	6.50	6.50	6.50	6.50	6.50	6.50	6.50	6.50	6.50	6.50	6.40	
20.0				6.50/19.6	6.30	6.10	6.00	5.90	5.80	5.70	5.60	5.50	5.40	5.30	
22.0					5.40	5.30	5.20	5.10	5.00	4.90	4.80	4.70	4.60	4.50	
24.0						4.60	4.50	4.40	4.30	4.20	4.10	4.00	3.90	3.80	
26.0						4.20/24.9	4.00	3.90	3.80	3.70	3.50	3.40	3.30	3.20	
28.0							3.50/27.5	3.40	3.30	3.20	3.00	2.90	2.60	2.70	
30.0								3.00	2.90	2.80	2.60	2.50	2.40	2.30	
32.0									2.60	2.50	2.30	2.20	2.00	1.90	
34.0									2.50/32.8	2.20	2.00	1.90	1.70	1.50	
36.0										2.0/35.5	1.70	1.60	1.40	1.20	
38.0											1.40	1.30	1.10	0.90	
Parts of Line	1	1	1	1	1	1	1	1	1	1	1	1	1	1	

Notes:-
 Capacities shown are in metric tons and are determined according to BS 1757 - over the side - with machine standing on firm supporting surface under ideal job conditions. Deductions from the lifting crane capacities must be made for weight of hook block.
 Side frames must be extended for all operating conditions.

SUMITOMO SC650-2 Rated Lifting Capacity Main Boom

Radius (Meters)	Full Counterweight Installed														Unit: Ton
	Boom Length (Meters)														
	12.20	15.25	18.30	21.35	24.40	27.45	30.50	33.50	36.55	39.60	42.65	45.70	48.75	51.80	54.85
3.6	65.00														
4.0	65.00	63.10/4.10													
4.5	55.80	55.00	54.10/4.6												
5.0	46.60	46.40	46.30	43.90/5.2	38.70/5.7										
6.0	34.90	34.80	34.70	34.60	34.50	33.10/5.2									
7.0	27.80	27.70	27.60	27.50	27.40	27.20	27.10	24.7/7.5							
8.0	23.00	22.90	22.80	22.70	22.60	22.50	22.40	22.30	22.20	20.5/8.5					
9.0	19.60	19.50	19.40	19.30	19.20	19.10	19.00	18.90	18.80	18.70	18.50				
10.0	17.10	17.00	16.90	16.80	16.70	16.60	16.50	16.40	16.30	16.20	16.10	16.00	15.60	14.5/10.5	11.0/11.0
12.0	14.00/11.7	13.30	13.20	13.10	13.00	12.90	12.80	12.70	12.60	12.50	12.40	12.30	12.20	12.10	10.50
14.0		10.90	10.80	10.70	10.60	10.50	10.40	10.30	10.20	10.10	10.00	9.90	9.80	9.70	9.60
16.0			9.00	8.90	8.80	8.70	8.60	8.50	8.40	8.30	8.20	8.10	8.00	7.90	7.80
18.0			8.30/17.0	7.70	7.60	7.50	7.40	7.30	7.20	7.10	7.00	6.90	6.80	6.70	6.50
20.0				6.90/19.6	6.80	6.40	6.30	6.20	6.10	6.00	5.90	5.80	5.70	5.60	5.50
22.0					5.70	5.60	5.50	5.40	5.30	5.20	5.10	5.00	4.90	4.80	4.70
24.0						4.90	4.80	4.70	4.60	4.50	4.40	4.30	4.20	4.10	3.90
26.0						4.50/24.9	4.30	4.20	4.10	4.00	3.80	3.70	3.60	3.50	3.40
28.0							3.80/27.5	3.70	3.60	3.50	3.30	3.20	3.10	3.00	2.90
30.0								3.30	3.20	3.10	2.90	2.80	2.70	2.60	2.50
32.0									2.90	2.80	2.60	2.50	2.30	2.20	2.00
34.0									2.8/32.8	2.50	2.30	2.20	2.00	1.80	1.70
36.0										2.30/35.5	2.00	1.90	1.70	1.50	1.40
38.0											1.70	1.60	1.40	1.20	1.10
Parts of Line	10	10	9	7	6	6	5	4	4	4	3	3	3	3	2

Notes:-
 Capacities shown are in metric tons and are determined according to BS 1757 - over the side - with machine standing on firm supporting surface under ideal job conditions. Deductions from the lifting crane capacities must be made for weight of hook block.
 Side frames must be extended for all operating conditions.

SUMITOMO SC650-2 Rated Lifting Capacity 21.00 Meter Tower

Full Counterweight Installed

Unit: Ton

Tower Angle	Luffing Jib Length (Meters)							
	16.00				19.00			
	90°	80°	70°	60°	90°	80°	70°	60°
Radius (M)								
6.7	13.0							
7.0	13.0				13.0/7.5			
8.0	13.0				13.0			
9.0	13.0				13.0			
10.0	13.0				13.0			
12.0	12.0	8.7/12.1			12.0	7.8/13.3		
14.0	10.2	7.4			10.2	7.4		
16.0	8.7	6.3			8.7	6.2		
18.0	7.7/17.5	5.5	5.0		7.5	5.4	4.5/19.6	
20.0		4.8	4.4		6.5	4.8	4.4	
22.0		4.4/21.2	4.0	3.4/23.4	6.2/20.4	4.2	3.9	
24.0			3.6	3.3		3.8	3.5	3.0/25.4
26.0			3.4/24.7	3.0		3.8/24.1	3.2	2.9
28.0				2.8/27.9			3.0/27.5	2.7
30.0								2.5
32.0								2.4/30.8

Notes:-

Capacities shown are in metric tons and are determined according to BS 1757 - over the side - with machine standing on firm supporting surface under ideal job conditions. Deductions from the lifting crane capacities must be made for weight of hook block.

Side frames must be extended for all operating conditions.

SUMITOMO SC650-2 Rated Lifting Capacity 24.05 Meter Tower

Full Counterweight Installed

Unit: Ton

Tower Angle	Luffing Jib Length (Meters)											
	16.00				19.00				22.00			
	90°	80°	70°	60°	90°	80°	70°	60°	90°	80°	70°	60°
Radius (M)												
6.7	13.0											
7.0	13.0				13.0/7.5							
8.0	13.0				13.0				13.0/8.3			
9.0	13.0				13.0				13.0			
10.0	13.0				13.0				13.0			
12.0	12.0	8.2/12.7			12.0	7.5/13.8			12.0			
14.0	10.2	7.3			10.2	7.3			10.2	6.6/14.9		
16.0	8.7	6.2			8.7	6.1			8.7	6.1		
18.0	7.7/17.5	5.4	4.5/19.1		7.5	5.3			7.5	5.3		
20.0		4.7	4.3		6.5	4.7	4.1/20.7		6.5	4.6		
22.0		4.3/21.7	3.9		6.2/20.4	4.1	3.8		5.6	4.1	3.6/22.2	
24.0			3.5	3.0/24.9		3.7	3.4		5.0/23.3	3.7	3.3	
26.0			3.2/25.7	2.8		3.6/24.6	3.1	2.7/25.9		3.3	3.0	
28.0				2.6			2.8	2.6		3.1/27.5	2.7	2.4/28.9
30.0				2.4/29.4				2.4			2.5	2.3
32.0								2.2			2.3/31.5	2.0
34.0									2.2/32.3			1.9
36.0												1.8/35.2

Notes:-

Capacities shown are in metric tons and are determined according to BS 1757 - over the side - with machine standing on firm supporting surface under ideal job conditions. Deductions from the lifting crane capacities must be made for weight of hook block.

Side frames must be extended for all operating conditions.

SUMITOMO SC650-2 Rated Lifting Capacity 27.10 Meter Tower

Tower Angle Radius (M)	Full Counterweight Installed															
	Luffing Jib Length (Meters)															
	16.00				19.00				22.00				25.00			
	90°	80°	70°	60°	90°	80°	70°	60°	90°	80°	70°	60°	90°	80°	70°	60°
6.7	13.0															
7.0	13.0				13.0/7.5				13.0/7.5							
8.0	13.0				13.0				13.0							
9.0	13.0				13.0				13.0				13.0			
10.0	13.0				13.0				13.0				13.0			
12.0	12.0	7.7/13.2			12.0	7.0/14.3			12.0				12.0			
14.0	10.2	7.2			10.2	6.0			10.2	6.3/15.4			10.2			
16.0	8.7	6.1			8.7	5.2			8.7	6.0			8.7	5.7/16.6		
18.0	7.7/17.5	5.3			7.5	4.6			7.5	5.2			7.5	5.1		
20.0		4.7	4.2/20.1		6.5	4.1	3.8/21.7		6.5	4.5			6.5	4.5		
22.0		4.1	3.8		6.2/20.4	3.7	3.7		5.0/23.3	4.0	3.3/23.3		5.6	4.0		
24.0		4.1/22.2	3.4			3.5/25.1	3.3			3.6	3.2		4.9	3.6	3.0/24.9	
26.0			3.1	2.7/26.4			3.0			3.3	2.9		4.2	3.2	2.8	
28.0			3.0/26.7	2.5			2.7	2.4/28.5		3.0	2.6		4.1/26.2	2.9	2.6	
30.0				2.3			2.5/29.6	2.2			2.4	2.1/30.5		2.7	2.4	
32.0				2.2/30.9				2.0			2.2	2.0		2.6/30.9	2.2	1.8/32.5
34.0								1.8/33.8			2.1/32.5	1.8			2.0	1.7
36.0												1.7			1.9/35.4	1.6
38.0												1.7/36.7				1.5
40.0																1.4/39.6

Notes:-

Capacities shown are in metric tons and are determined according to BS 1757 - over the side - with machine standing on firm supporting surface under ideal job conditions. Deductions from the lifting crane capacities must be made for weight of hook block.
Side frames must be extended for all operating conditions.

SUMITOMO SC650-2 Rated Lifting Capacity 30.15 Meter Tower

Tower Angle Radius (M)	Full Counterweight Installed																			
	Luffing Jib Length (Meters)																			
	16.00				19.00				22.00				25.00				28.00			
	90°	80°	70°	60°	90°	80°	70°	60°	90°	80°	70°	60°	90°	80°	70°	60°	90°	80°	70°	
6.7	13.0																			
7.0	13.0				13.0/7.5															
8.0	13.0				13.0				13.0/8.3											
9.0	13.0				13.0				13.0				13.0							
10.0	13.0				13.0				13.0				13.0					12.5/9.8		
12.0	12.0	7.3/13.7			12.0				12.0				12.0					12.4		
14.0	10.2	7.1			10.2	6.6/14.8			10.2				10.2					10.8		
16.0	8.7	6.0			8.7	5.9			8.7	5.9			8.7	5.4/17.1				9.4		
18.0	7.7/17.5	5.3			7.5	5.1			7.5	5.1			7.5	5.0				8.7	4.9/18.2	
20.0		4.6	3.8/21.1		6.5	4.5			6.5	4.5			6.5	4.4				7.5	4.4	
22.0		4.1	3.6		6.2/20.4	4.0	3.5/22.7		5.6	4.0			5.6	3.9				6.5	3.9	
24.0		3.9/22.8	3.2			3.6	3.2		5.0/23.3	3.6	3.0/24.3		4.9	3.5	2.7/25.9			5.6	3.5	
26.0			2.9			3.3/25.7	2.9			3.2	2.8		4.2	3.1	2.7			4.9	3.1	2.4/27.5
28.0			2.7/27.6	2.3			2.6			2.9	2.5		4.1/26.2	2.8	2.5			4.2	2.8	2.4
30.0				2.1			2.4	2.1		2.9/28.6	2.3			2.6	2.3			3.6	2.6	2.2
32.0				1.9/32.4			2.3/30.7	1.9			2.1	1.8		2.5/31.5	2.1			3.4/29.1	2.4	2.0
34.0								1.7			1.9/33.6	1.6			1.9	1.5			2.2	1.8
36.0								1.6/35.3				1.4			1.8	1.4			2.2/34.4	1.7
38.0												1.4			1.7/36.5	1.3				1.6
40.0												1.3/38.2				1.2				1.5/39.4
42.0																1.2/41.1				

Notes:-

Capacities shown are in metric tons and are determined according to BS 1757 - over the side - with machine standing on firm supporting surface under ideal job conditions. Deductions from the lifting crane capacities must be made for weight of hook block.
Side frames must be extended for all operating conditions.

SUMITOMO SC650-2 Rated Lifting Capacity 33.20 Meter Tower

Full Counterweight Installed

Unit: Ton

Tower Angle Radius (M)	Luffing Jib Length (Meters)																				
	16.00				19.00				22.00				25.00			28.00			31.00		
	90°	80°	70°	60°	90°	80°	70°	60°	90°	80°	70°	60°	90°	80°	70°	90°	80°	70°	90°	80°	
6.7	13.0																				
7.0	13.0				13.0/7.5																
8.0	13.0				13.0				13.0/8.3												
9.0	13.0				13.0				13.0				13.0					11.7/9.8			
10.0	13.0				13.0				13.0				13.0					11.7			9.4/10.6
12.0	12.0				12.0				12.0				12.0					10.8			8.8
14.0	10.2	6.9/14.2			10.2	6.2/15.4			10.2				10.2					9.4			8.0
16.0	8.7	5.9			8.7	5.6			8.7	5.6/16.5			8.7	5.1/17.6				8.7			7.6
18.0	7.7/17.5	5.2			7.5	5.1			7.5	5.1			7.5	4.9				7.5	4.7/18.7		7.0
20.0		4.5			6.5	4.5			6.5	4.4			6.5	4.3				6.5	4.3		6.5
22.0		4.0	3.4/22.2		6.2/20.4	3.9	3.1/23.8		5.6	3.9			5.6	3.9				5.6	3.8		5.6
24.0		3.7/23.3	3.1		3.5	3.1			5.0/23.3	3.5	2.7/25.4		4.9	3.5				4.9	3.4		4.9
26.0			2.8		3.2	2.8			3.2	2.7			4.2	3.1	2.4/27.0			4.2	3.0		4.2
28.0			2.6	2.0/29.5	3.2/26.2	2.5			2.9	2.4			4.1/26.2	2.8	2.3			3.6	2.8	2.2/28.5	3.6
30.0			2.5/28.8	2.0		2.3	1.8/31.5		2.8/29.1	2.2			2.6	2.1	3.4/29.1			2.6	2.1	3.1	2.5
32.0			1.8			2.2/31.7	1.8			2.0	1.5/33.5		2.4	1.9				2.3	1.9	2.6	2.3
34.0			1.7				1.6			1.8	1.5			1.7				2.1	1.7	2.1	2.1
36.0							1.5			1.8/34.6	1.4							1.6	2.1/34.9	1.6	1.9
38.0							1.5/36.9				1.3							1.5/37.5		1.5	1.8/37.8
40.0											1.2/39.8									1.4	
42.0																				1.4/40.4	

Notes:-

Capacities shown are in metric tons and are determined according to BS 1757 - over the side - with machine standing on firm supporting surface under ideal job conditions. Deductions from the lifting crane capacities must be made for weight of hook block.
Side frames must be extended for all operating conditions.

SUMITOMO SC650-2 Rated Lifting Capacity 36.25 Meter Tower

Full Counterweight Installed

Unit: Ton

Tower Angle Radius (M)	Luffing Jib Length (Meters)																				
	16.00				19.00				22.00				25.00			28.00			31.00		
	90°	80°	70°	60°	90°	80°	70°	60°	90°	80°	70°	60°	90°	80°	70°	90°	80°	70°	90°	80°	
6.7	13.0																				
7.0	13.0				13.0/7.5																
8.0	13.0				13.0				13.0/8.3												
9.0	13.0				13.0				13.0				11.9					11.1/9.8			
10.0	13.0				13.0				13.0				11.9					11.1			9.4/10.6
12.0	12.0				12.0				12.0				11.8					10.8			8.8
14.0	10.2	6.4/14.8			10.2	5.7/15.9			10.2				10.2					9.4			8.0
16.0	8.7	5.9			8.7	5.7			8.7	5.3/17.0			8.7					8.7			7.6
18.0	7.7/17.5	5.1			7.5	5.0			7.5	5.0			7.5	4.8/18.1				7.5	4.4/19.3		7.0
20.0		4.4			6.5	4.4			6.5	4.4			6.5	4.3				6.5	4.2		6.5
22.0		3.9	3.1/23.2		6.2/20.4	3.8			5.6	3.8			5.6	3.8				5.6	3.7		5.6
24.0		3.5/23.8	3.0		3.4	2.9/24.8			5.0/23.3	3.4			4.9	3.4				4.9	3.3		4.9
26.0			2.7		3.2	2.7			3.1	2.5/26.4			4.2	3.0				4.2	2.9		4.2
28.0			2.5		3.1/26.7	2.4			2.8	2.3	4.1/26.2		2.7	2.2				3.6	2.7	2.0/29.6	3.6
30.0			2.3/29.9	1.7/31.0		2.2			2.6/29.6	2.1			2.5	2.0	3.4/29.1			2.5	2.0	3.1	2.4
32.0				1.6		2.0	1.5/33.0			1.9			2.3	1.8				2.3	1.8	2.6	2.2
34.0				1.5		2.0/32.8	1.4			1.7			2.3/32.5	1.7				2.1	1.6	2.0	2.0
36.0				1.4/35.5			1.2			1.6/35.7				1.5				2.0/35.4	1.5		1.8
38.0							1.2							1.4					1.4		1.7
40.0							1.2/38.4								1.3/38.6				1.3		1.7/38.3
41.15																				1.2	

Notes:-

Capacities shown are in metric tons and are determined according to BS 1757 - over the side - with machine standing on firm supporting surface under ideal job conditions. Deductions from the lifting crane capacities must be made for weight of hook block.
Side frames must be extended for all operating conditions.

SUMITOMO SC650-2 Rated Lifting Capacity 39.30 Meter Tower

Full Counterweight Installed

Unit: Ton

Tower Angle Radius (M)	Luffing Jib Length (Meters)																
	16.00				19.00			22.00			25.00			28.00		31.00	
	90°	80°	70°	60°	90°	80°	70°	90°	80°	70°	90°	80°	70°	90°	80°	90°	80°
6.7	13.0																
7.0	13.0				13.0/7.5												
8.0	13.0				13.0			11.9/8.3									
9.0	13.0				13.0			11.9				10.7			9.8/9.8		
10.0	13.0				13.0			11.9				10.7				9.4/10.6	
12.0	12.0				12.0			11.8				10.7			9.8		8.8
14.0	10.2	6.1/15.3			10.2			10.2				10.2			9.4		8.0
16.0	8.7	5.8			8.7	5.5/16.4		8.7	5.0/17.6			8.7			8.7		7.6
18.0	7.7/17.5	5.0			7.5	4.9		7.5	4.9			7.5	4.5/18.7		7.5	4.2/19.8	7.0
20.0		4.4			6.5	4.3		6.5	4.3			6.5	4.2		6.5	4.1	6.5 3.8/20.9
22.0		3.9			6.2/20.4	3.8		5.6	3.8			5.6	3.8		5.6	3.7	5.6 3.6
24.0		3.5	2.8/24.3			3.4	2.6/25.9	5.0/23.3	3.4			4.9	3.3		4.9	3.3	4.9 3.2
26.0		3.4/24.4	2.6			3.1	2.6		3.1	2.3/27.5		4.2	3.0		4.2	2.9	4.2 2.8
28.0			2.4			2.9/27.3	2.3		2.8	2.2	4.1/26.2	2.7	2.0/29.0		3.6	2.6	3.6 2.6
30.0			2.2				2.1		2.5	2.0		2.5	1.9	3.4/29.1	2.4	3.1	2.4
32.0			2.1/30.9	1.5/32.5			1.9		2.5/30.1	1.8		2.3	1.7		2.2	2.6	2.2
34.0				1.4			1.8/33.8			1.6		2.2/33.0	1.6		2.0		2.0
36.0				1.3						1.5			1.5		1.9/35.9		1.8
38.0				1.2/37.0						1.5/36.7			1.4				1.7
39.6													1.3				1.6/38.8

Notes:-

Capacities shown are in metric tons and are determined according to BS 1757 - over the side - with machine standing on firm supporting surface under ideal job conditions. Deductions from the lifting crane capacities must be made for weight of hook block.
Side frames must be extended for all operating conditions.

SUMITOMO SC650-2 Rated Lifting Capacity 42.35 Meter Tower

Full Counterweight Installed

Unit: Ton

Tower Angle Radius (M)	Luffing Jib Length (Meters)																
	16.00				19.00			22.00			25.00			28.00		31.00	
	90°	80°	70°	60°	90°	80°	70°	90°	80°	70°	90°	80°	70°	90°	80°	90°	80°
6.7	12.0																
7.0	12.0				11.7/7.5												
8.0	12.0				11.7			11.0/8.3									
9.0	12.0				11.7			11.0			10.6		8.8/9.8				
10.0	12.0				11.7			11.0			10.5		8.8			8.8/10.6	
12.0	12.0				11.6			11.0			10.2		8.8			8.8	
14.0	10.2	5.8/15.8			10.2			10.2			10.0		8.8			8.0	
16.0	6.7	5.7			8.7	5.2/17.0		8.7			8.7		8.7			7.6	
18.0	7.7/17.5	4.9			7.5	4.8		7.5	4.8/18.1		7.5	4.3/19.2	7.5		7.0		
20.0		4.3			6.5	4.2		6.5	4.2		6.5	4.1	6.5	4.0/20.3	6.5	3.6/21.5	
22.0		3.8			6.2/20.4	3.7		5.6	3.7		5.6	3.7	4.9	3.6	5.6	3.5	
24.0		3.4	2.5/25.3			3.3		5.0/23.3	3.3		4.9	3.3	4.2	3.2	4.9	3.1	
26.0		3.3/24.9	2.4			3.0	2.2/26.9		3.0		4.2	2.9	3.6	2.8	4.2	2.7	
28.0			2.2			2.8/27.8	2.1		2.7	2.1/28.5	4.1/26.2	2.6	3.4/29.1	2.6	3.6	2.5	
30.0			2.0				1.9		2.5	1.9		2.4		2.4	3.1	2.3	
32.0			1.8/31.9				1.7		2.4/30.7	1.7		2.2		2.2	2.6	2.1	
34.0							1.6			1.5		2.0/33.6		2.0		1.9	
36.0							1.6/34.8			1.4				1.8		1.7	
38.0										1.3/37.7				1.8/36.5		1.6	
39.4																1.5	

Notes:-

Capacities shown are in metric tons and are determined according to BS 1757 - over the side - with machine standing on firm supporting surface under ideal job conditions. Deductions from the lifting crane capacities must be made for weight of hook block.
Side frames must be extended for all operating conditions.