

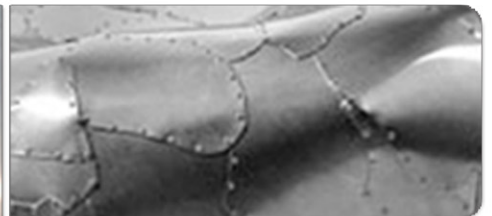
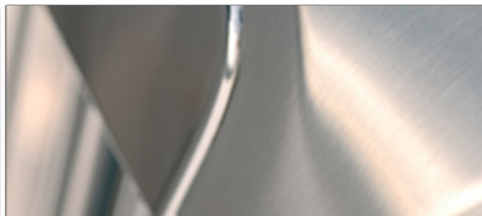
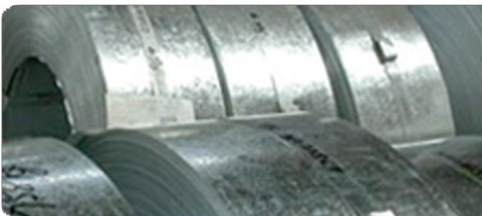


Steel MacTM
LIMITED

SteelMac Limited, Unit 27 New Harbours, Gibraltar

RadComm RC2 Portable Detector

Specification Sheet



RadComm RC2 Portable Detector



Specifications

Detector	32 cu.in. (0.54L) plastic scintillator detector
Energy Responses	From 30KeV
Sensitivity	150 counts per second (cps) in 5 μ R/hr standard background 15 counts per second (cps) per 1 μ Ci at 1 meter distance from Cs-137 source
Operation	Single button activation automatically sets audio alarm levels and display function (counts per second or 10 second accumulation of counts). Remaining battery life is displayed (in hours) when RC2 is turned off.
Display	Large 5.62 x 2.40 in. (15.75 x 61 mm) liquid crystal display of radioactive counts per second, updated every second
Temperature Range	-10°C to +50°C (+14°F to +122°F)
Mechanical:	Structurally reinforced weatherproof aluminum case, shoulder strap
Size:	3.6 in. height + 2 in (51mm) handle x 5.1 in. width x 9.75 in. length (92mm x 130mm x 248mm)
Weight	5.75 lbs (2.6 Kg)
Battery:	Rechargeable 6 volt sealed lead acid battery pack (internal) - 8 hours continuous operation/charge at 2EC; 4 hour full re-charge using 100v/60Hz or 220v/50Hz smart battery charger supplied with RC2. Yearly calibration certificate available for ISO Quality or Environmental system