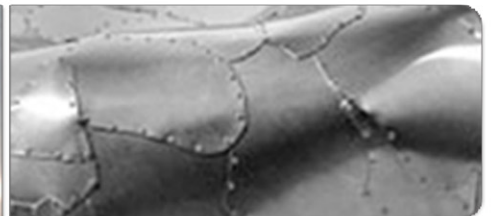
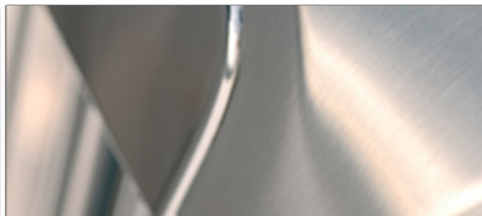
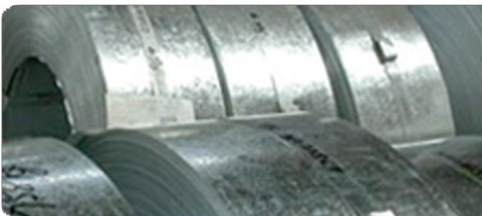




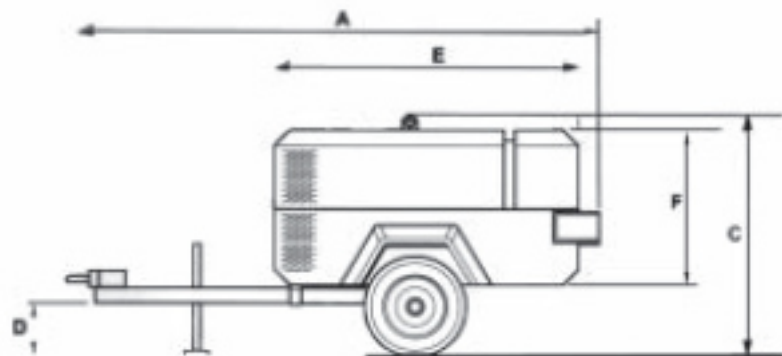
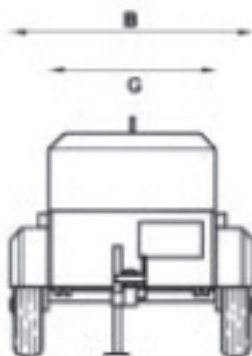
Steel MacTM
LIMITED

SteelMac Limited, Unit 27 New Harbours, Gibraltar

**Ingersoll Rand 7/41 & Atlas Copco XAS-66
Air Compressors**
Specification Sheet



Ingersoll Rand 7/41 (x2) & Atlas Copco XAS-66





Ingersoll Rand 7/41 Specifications

Model		7/41
Compressor		
Free Air Delivery-m ³ /min		4.0
Rated Operating Pressure - bar		7
Maximum allowable pressure - bar		8.6
Safety valve setting - bar		10
Engine		
Make		Ingersoll-Rand
Model		4IRH8N
No.of Cylinders		4
Full Load Speed - rpm		2800
Power - kW (hp)		34.8 (47.0)
Electrical - volts		12
Cooling		Water
Fuel Tank Capacity - litres		40
Air Outlets - BSPT*		2 x 3/4"
Sound level data		
Fully compliant to outdoor noise directive 2000/14/EC (2006)	LWa	98
Tyres		
Tyre Size		155R13
Number of wheels		2
Dimensions (With running gear)		
Length (fixed height) (mm)	(A)	2972
Length min-max (adjustable height) (mm)	(A)	3413 ~ 3577
Width (mm)	(B)	1390
Height (mm)	(C)	1333
Ground clearance (mm)	(D)	250
Weight (net) fixed/adjustable (kg) **		650 / 700
Weight (working) fixed/adjustable (kg) **		685 / 735
Dimensions (on shipping skid)		
Length (mm)	(E)	1790
Width (mm)	(G)	940
Height (mm)	(F)	970
Weight (net) (kg) **		535
Weight (working) (kg) **		570
* British Standard Pipe Thread		
** Unbraked running gear - deduct (kg) fix/ adj.		NA
** Generator option - add (kg)		45



Atlas Copco XAS-66 Specifications

Model	Type	Capacity CFM	Pressure PSI	Compressor			Ambient Temp. F°	Engine						Dimensions			
				Outlets	Unloader	Oil gal.		Make/Model	RPM	BHP	Elect. volts	Cooling	Fuel gal.	Length	Width	Height	Weight lbs.
XAS-36 YD	Rotary screw	74	102	2	cont. mod.	1.19	-20°—+122°	Yanmar 3TND58E	2400/2600	20.5	12	Water	5.6	97"	48"	46"	1007
XAS-46 DD	Rotary screw	90	102	2	cont. mod.	1.7	-20°—+122°	Deutz F2M1011F	1600/2600	27.4	12	Air/Oil	10.6	112"	51"	50"	1548
XAS-56 DD	Rotary screw	110	102	2	cont. mod.	1.7	-20°—+122°	Deutz F2M1011F	1800/3000	30.2	12	Air/Oil	10.6	112"	51"	50"	1548
XAS-66 DD	Rotary screw	130	102	2	cont. mod.	1.7	-20°—+122°	Deutz F5M1011F	1400/2400	40.6	12	Air/Oil	15.3	118"	53"	50"	1735