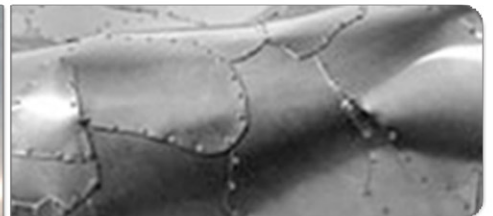
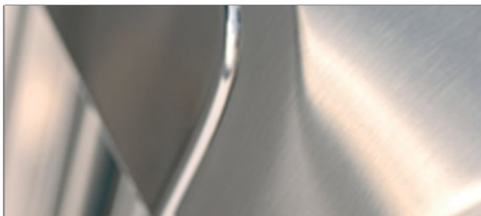
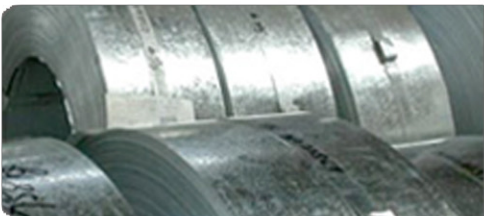




SteelMac Limited, Unit 27 New Harbours, Gibraltar

## **ArcGen 300 SSD Weldmaker** Specification Sheet



## ArcGen 300 SSD Weldmaker



- Welder-Generator Super Silent
- Water Cooled Kubota Engine
- 40-300 AMPS DC Welder
- 2 X 16 AMP 110 Volt Sockets
- 1 X 32 AMP 110 Volt Socket
- Auto Idle

The Weldmaker 300SD Super Silent Diesel Welder is a high performance brushless welder/generator providing up to 300amps of DC welding current and up to 10kW 110 volt auxiliary output. The welding performance of the machine has been specifically designed for all types of manual metal arc electrodes, especially cellulosic electrodes. Remote control facilities are fitted on the control panel.

The large 40 litre fuel tank provides up to 15 hours operation without refuelling under normal conditions. Powered by an electric start Kubota engine, the machine has Auto-idle fitted as standard, which operates from the welding and auxiliary outputs reducing noise and fuel consumption. Auto shutdown is fitted to the machine, which will operate in the event of low oil pressure/high water temperature or thermal overload if the generator overheats. Super silent in operation, the Weldmaker 300SD meets all the European sound and CE legislation.