



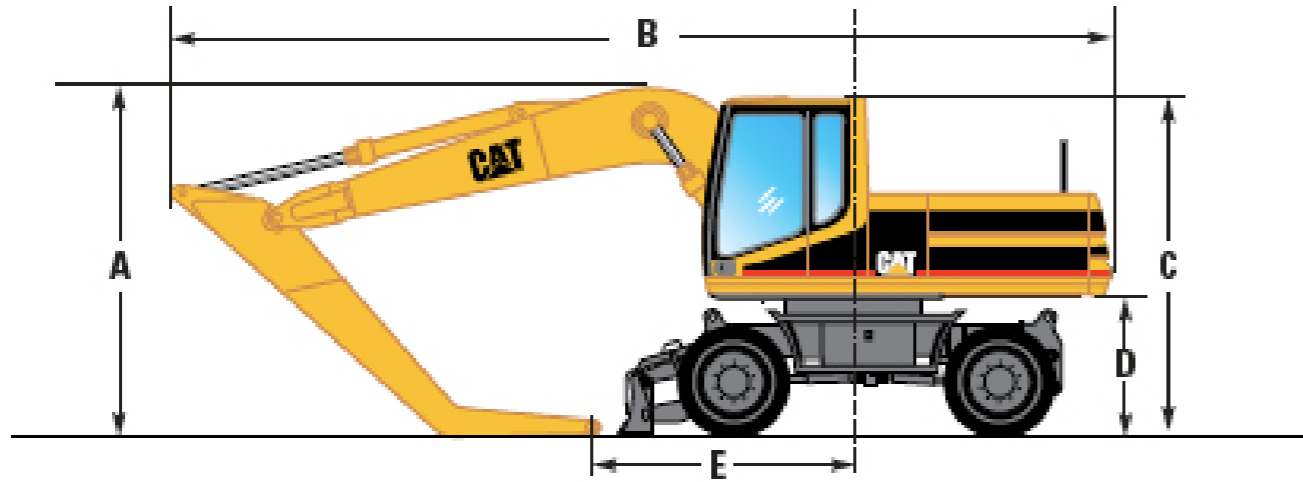
**Steel Mac**<sup>TM</sup>  
LIMITED

SteelMac Limited, Unit 27 New Harbours, Gibraltar

# **Caterpillar M315**

## Specification Sheet

# Caterpillar M315

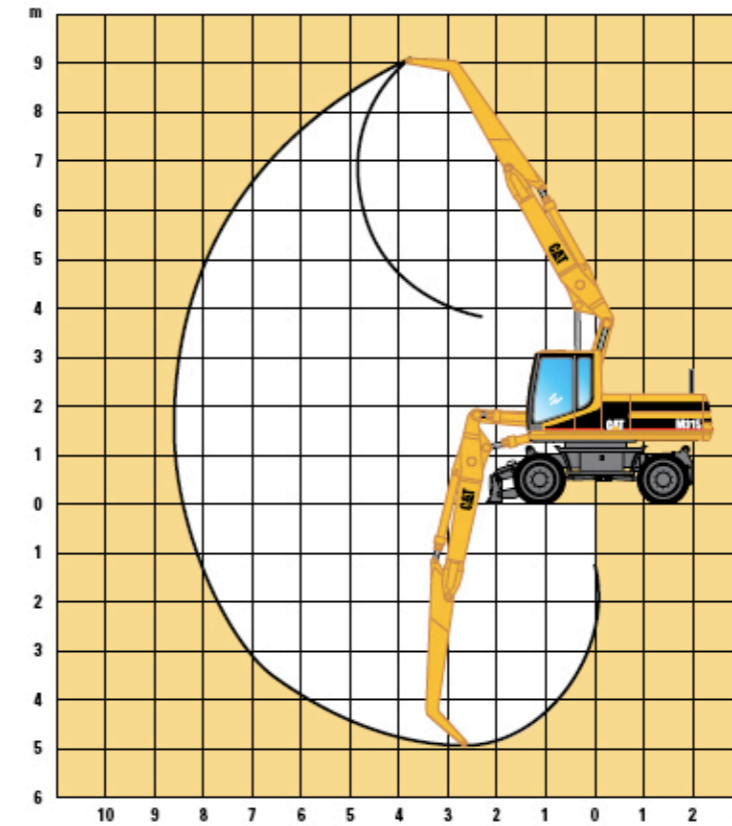


## Technical Data

weight	15.9 tonnes
horsepower	117 (86) hp/cv(kW)
length (variable boom two piece)	8.47m
height	3.08m
width	2.50m
standard capacity	0.7m <sup>3</sup>

## Working Ranges M315 VA boom

With VA boom 5.25 m and industrial stick 3.0 m.



## Lift capacities M315 VA boom

With 400 kg additional counterweight and "heavy lift" arrangement. All weights are in metric tons.

**Height	Undercarriage configuration	3.0 m		4.5m		6.0m		7.5m		9.0 m		m
6.00m	All stabilizers up All stabilizers down					*3.2	2.8					
4.50m	All stabilizers up All stabilizers down			*3.6	*3.6	*3.6	2.8	*2.8	2.0			
3.00m	All stabilizers up All stabilizers down	*9.0	7.0	*5.9	4.1	4.1	2.8	3.0	2.0			*2.1 1.6
1.50m	All stabilizers up All stabilizers down	*8.7	6.9	6.0	4.0	*4.1	2.8	2.9	1.9			*2.2 1.6
0.00m	All stabilizers up All stabilizers down	*10.1	6.8	6.0	4.0	4.0	2.7	2.8	1.8			*2.4 1.6
-1.50m	All stabilizers up All stabilizers down	11.5	6.6	6.1	3.8	3.9	2.5	2.8	1.7			2.7 1.7
-3.00m	All stabilizers up All stabilizers down	11.7	6.5	5.9	3.6	3.8	2.4					3.2 2.0
-4.50m	All stabilizers up All stabilizers down	11.4	6.3	5.7	3.5							*3.6 *3.6

Load Radius Over Front      Load Radius Over Side      Load at Maximum Reach

\* Limited by hydraulic rather than tipping load  
 \*\* Height of stick pin  
 The above loads are in compliance with hydraulic excavator lift capacity ratings standard ISO 10567, they do not exceed 87% of hydraulic lifting capacity or 75% of tipping capacity. Weight of all lifting accessories must be deducted from the above lift capacities