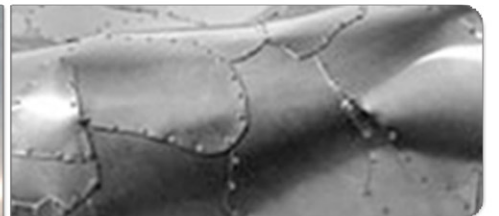
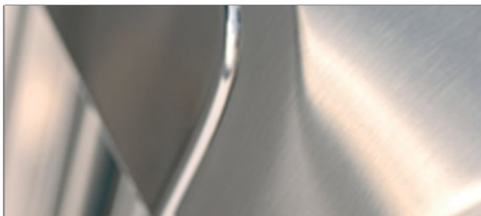
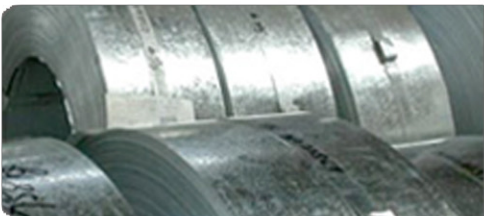




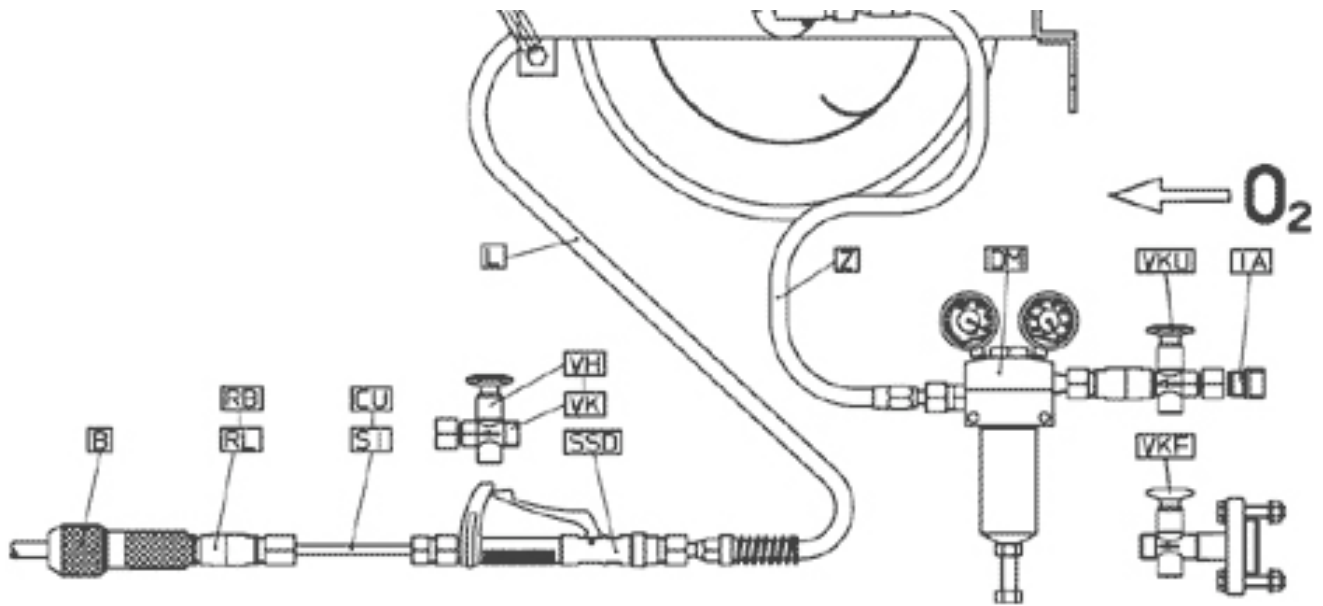
SteelMac Limited, Unit 27 New Harbours, Gibraltar

Plasma Cutters

Specification Sheet



Plasma Cutter



- Lance holder
- Backfire safety device, slag return safety device
- Safety extension tube (option)
- Quick shut valve
- hand-valve ("1/2 turn" oder "5 turns")
- Security-lance-hose (with glass fibre cover or with metal braiding)
- Safety-hose-reel
- Hose roller guide
- Connecting hose
- Pressure regulator
- Shut-off valve at O2-supply-line
- Adaptor with cone